

SEALUX HydroHALT TileBud

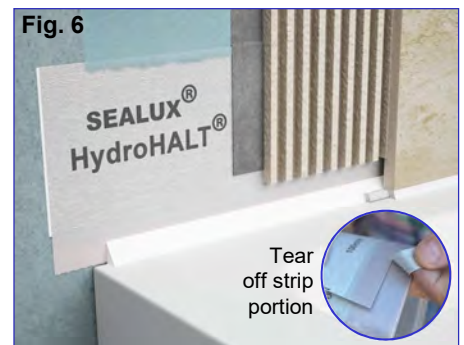
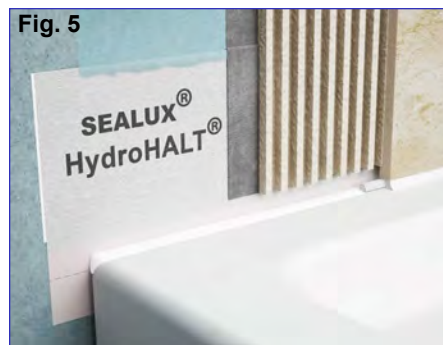
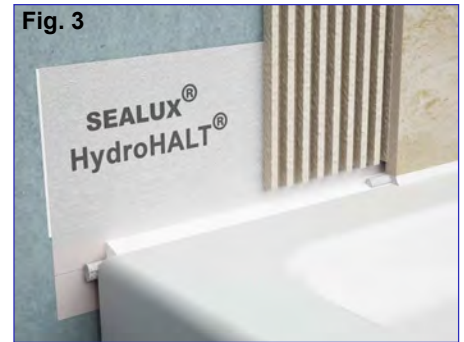
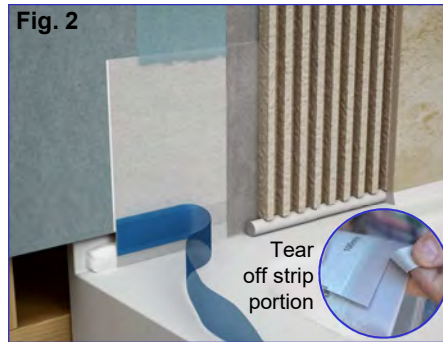
Installation Possibilities Installation videos: www.hydrohalt.com

Page 2: Install TileBud during installation of a shower tray or bath (Fig. 1).

Page 3: Install TileBud to seal a shower tray or bath with an upstand (Fig. 2).

Page 4: Install TileBud to seal existing ledge/wall joints of 1mm+ (Figs. 3, 4 & 5).

Page 4: Install TileBud over a ledge/wall butt joint (Fig. 6).



TileBud Kit Contents

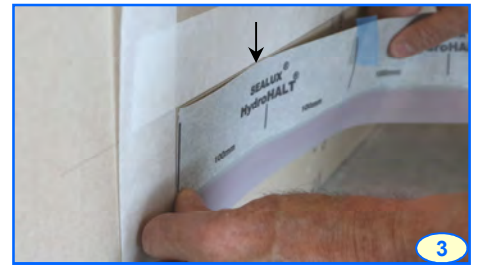
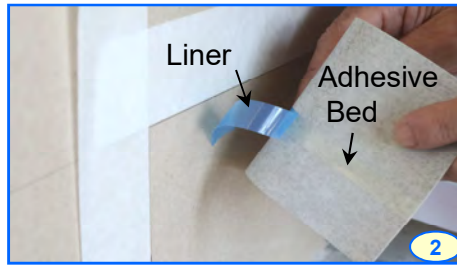
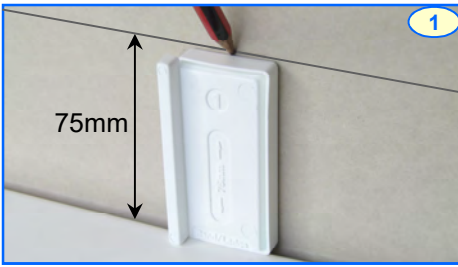
1. TileBud Roll (2.0 Mtrs. - 3.8 Mtrs.)
2. 6mm x 12mm Backer Rod
3. Sealux-N Adhesive Sealant
4. Backer Rod Alignment Guide
5. 2 Alcohol Surface Cleaning Wipes
6. Adhesive Sealant Spatula
7. Joint Sealant Spatula

Tools & Material Required

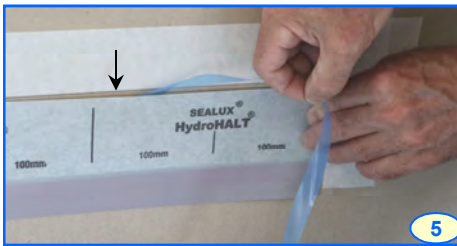
1. Sealant Gun
 2. Tape and Pencil
 3. 50mm Masking Tape
 4. Scissors or sharp Blade
 5. Sealant Tissues
 6. A Straight Edge (Level)
- 7mm round backer rod detailed in Figs. 3 and 4 can be supplied upon request.

Surface Preparation and Care: Remove the tray or bath surface protection film from areas in contact with silicone. Ensure the tray/bath surface is of a material type that adheres to silicone. Use wire wool to abrade surfaces in contact with silicone and clean with alcohol wipes/methylated spirits. Ensure all shower wall surfaces behind the HydroHALT strip are clean, dry and in good condition. Before sealing the ledge/wall during installation ensure the tray or bath is stable on floor and carry out a water test on the waste system for leaks.

Page 2: Install TileBud during installation of a tray or bath (Page 1 Fig. 1).



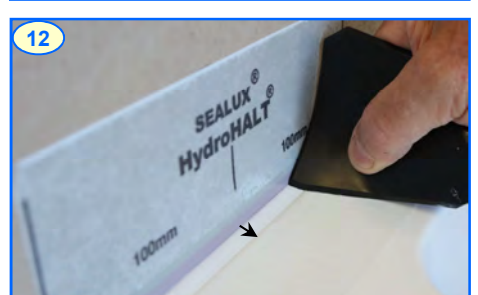
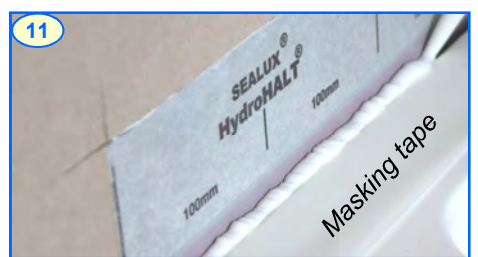
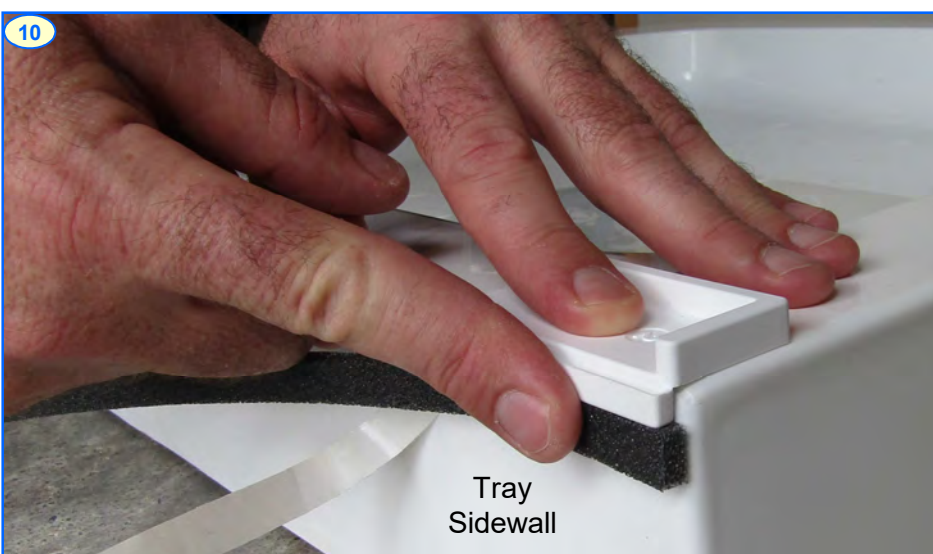
Locate tray/bath in its intended final position and height. Use alignment guide to mark walls 75mm over each ledge. Draw wall lines through wall marks. Mark wall at ledge ends. Optional: apply masking tape on walls outside wall lines to prevent smearing Sealux-N sealant. Measure and cut the strip length to extend over the ledge/wall joint. Progressively removing release liner to expose adhesive bed, align the strip upper edge with wall line or masking tape and press-bond strip to wall.



Use spatula straight edge to push strip into corner(s). Tape the strip back to wall. Apply a 5mm diameter zigzag line of Sealux-N every 100mm on wall between strip and masking tape/wall line.

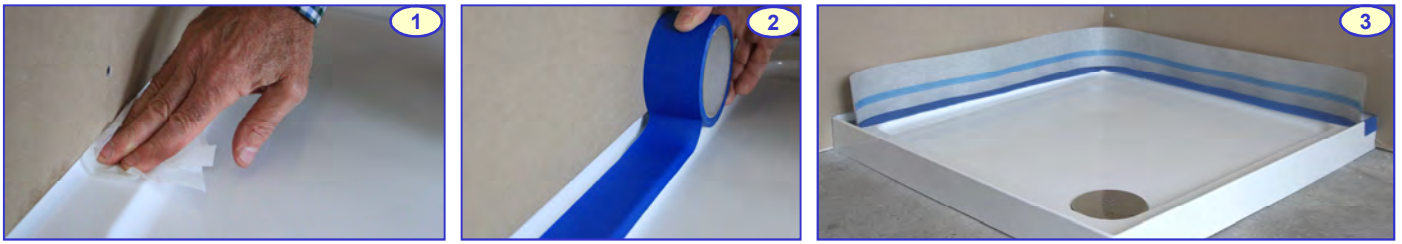


Spread the sealant on the wall using serrated edge of spatula. Lift up strip and using the spatula straight edge, press the strip into corners first and then against the walls to form permanent bond. Remove the wall masking tape if applied. Clean the shower tray or bath sidewalls with Alcohol wipes. Refer to 'Surface Preparation and Care' paragraph on bottom of front page.



With the alignment guide held down and overhanging the ledge, progressively removing the backer rod liner, lift the backer rod up to touch the underside of alignment guide and then press the backer rod inward to bond onto sidewalls being sealed. Install the tray or bath against the strip on the wall keeping tray/bath sidewall surfaces over backer rod free of fingerprints. Apply masking tape over flat ledge surface just outside the joint. Apply Sealux-N into the joint leaving it *slightly* proud of the ledge. Rub up the Sealux-N to fall towards ledge. Seal one side at a time. Remove masking tape.

Page 3: Install TileBud to seal a tray or bath with an upstand (Page 1 Fig. 2).



Clean ledge and upstand surfaces with alcohol wipes. Apply masking tape over ledge slightly outside the line of overhanging wall face above. Cut strip length to extend over upstand/wall joint.



Tear off lower strip portion below perforation line. If required, snip the strip end to extend over upstand. Using a torn strip off-cut, rest the perforation line on the ledge and mark strip height on wall. Draw continuous wall lines through wall marks defining the strip upper boundary line on wall.



To avoid smearing adhesive above wall line, apply masking tape on wall (optional). Apply Sealux-N over upstand surface and rub up Sealux-N to leave flush with overhanging wall face above.

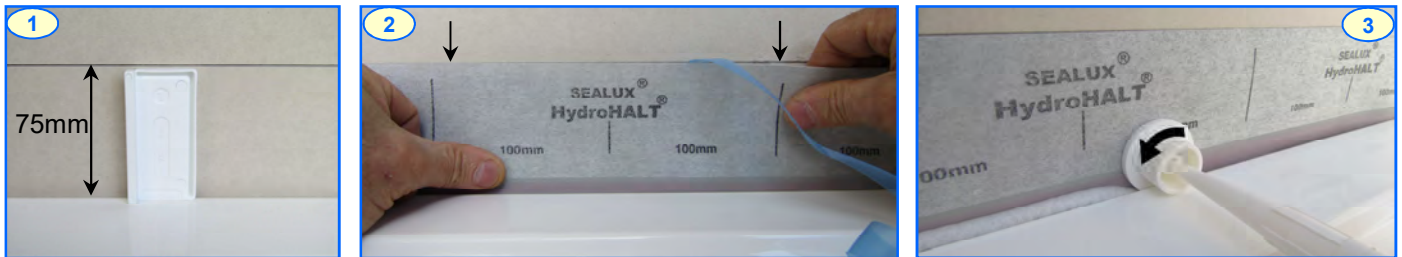


Apply a 50mm diameter zigzag line of Sealux-N at 100mm centres on wall and spread with serrated edge of spatula. With strip perforation line on ledge and logo facing wall, press-bond strip to wall with spatula straight edge ensuring strip extends into corners and lower strip fleece free face engages upstand sealant. Remove ledge and wall masking tapes. Remove blue liner off strip.



Page 4: Install TileBud to seal existing 1mm+ ledge/wall joints (Page 1 Figs. 3-5).

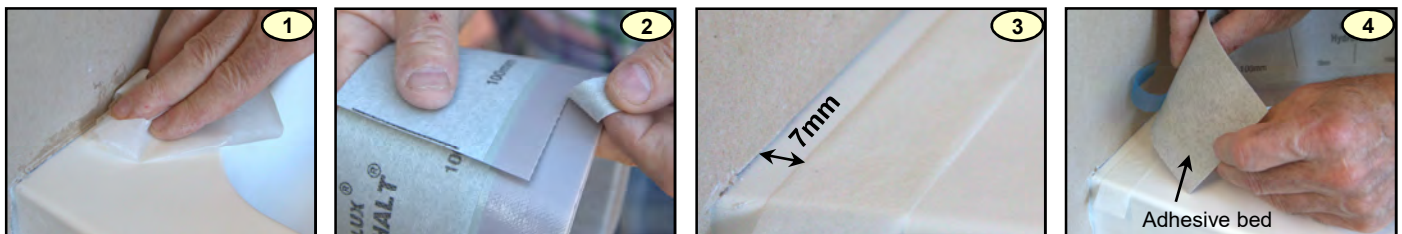
If planned to install TileBud after tray/bath installation, the plumber should leave a 5mm gap between tray/bath sidewall and wall for backer rod. Backer rod diameter should be 2mm wider than the joint width. Using the TileBud wheel to insert the backer rod 6mm down inside the joint.



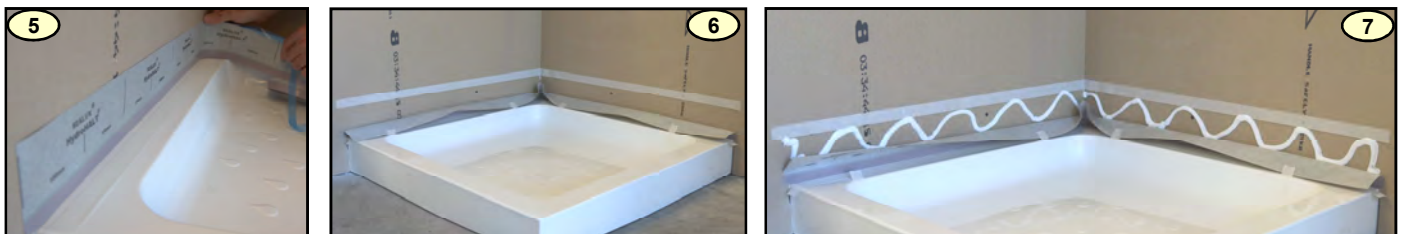
Clean the shower tray or bath sidewalls with alcohol wipes. Use alignment guide to mark walls over ledge. Cut strip to length and lower down into joint. Progressively removing the release liner, lift and align the strip to the wall line and press-bond the exposed adhesive bed to wall.

Use spatula straight edge to push strip into corner(s). With strip mounted on wall, follow the strip bonding instructions on page 2 Figs. 6/7/8. After strip is bonded to the wall insert a round backer rod into the joint 6mm below the ledge. Follow the joint sealing instructions on page 2 Figs. 11/12.

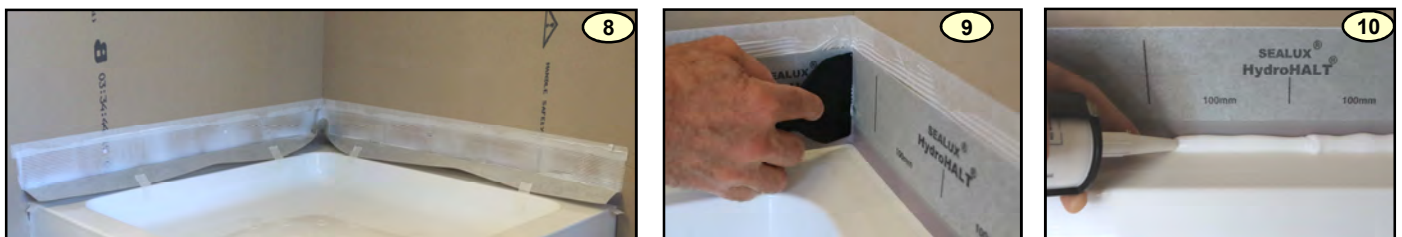
Page 4: Install TileBud over a ledge/wall butt joint (Page 1 Fig. 6).



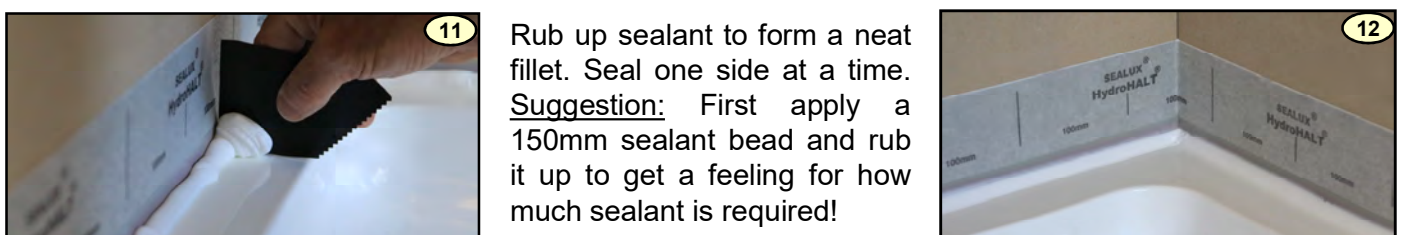
Clean ledge with alcohol wipes. Cut strip to extend along ledge/wall joint. Tear off lower strip portion. Apply masking tape over the ledge 7mm out from wall. Rest strip perforation line on the ledge. Peel back liner.



While removing release liner, press-bond strip to wall. Apply masking tape on wall above strip upper boundary. Tape strip back to ledge. Apply a 5mm diameter zigzag line of Sealux-N every 100mm on wall.



Spread sealant on wall using serrated edge of spatula. Using spatula straight edge, lift up strip and press into corners and then against walls. Remove masking tape. Apply a line of Sealux-N over strip/ledge joint.



Rub up sealant to form a neat fillet. Seal one side at a time. Suggestion: First apply a 150mm sealant bead and rub it up to get a feeling for how much sealant is required!