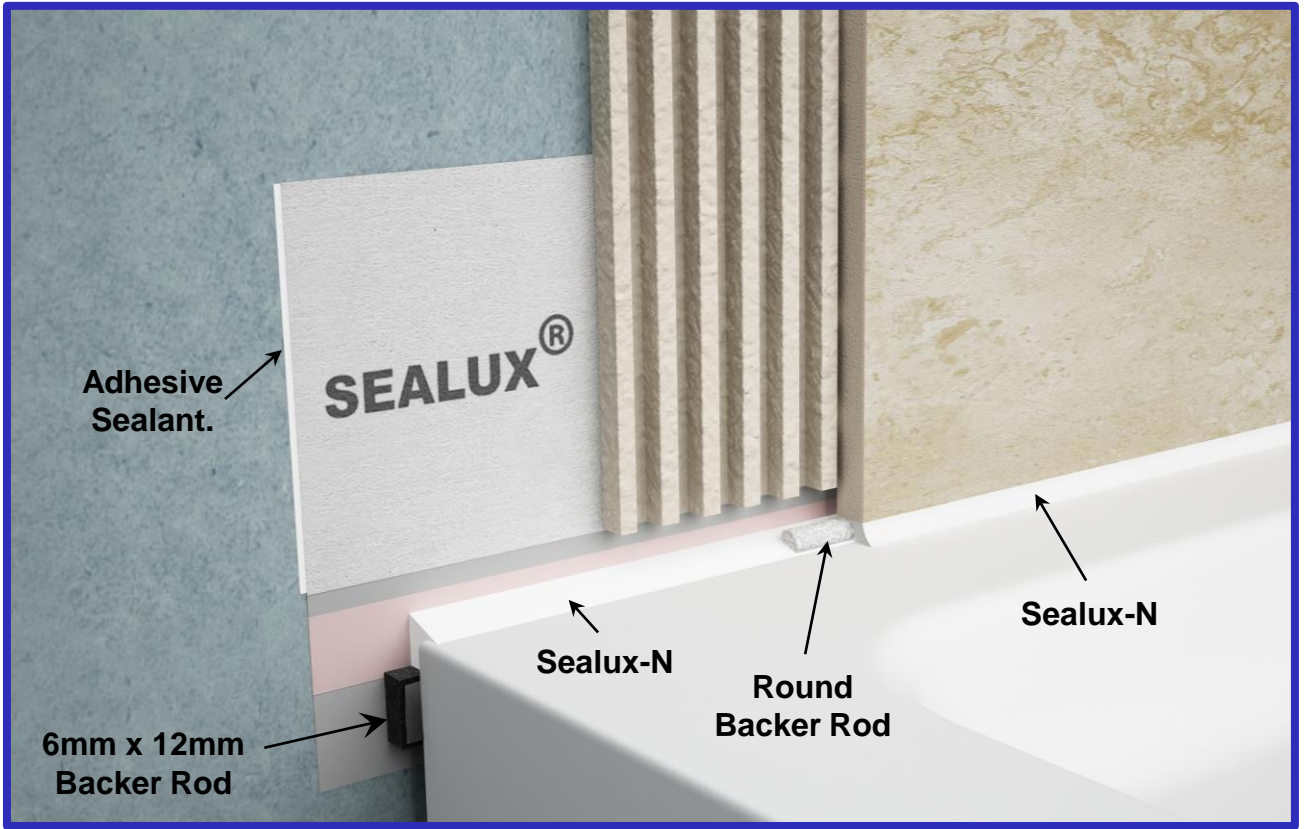


Installation Animation: [www.hydrohalt.com](http://www.hydrohalt.com)



## HydroHalt PlumBud Kit Contents

**NOTE:** If planning to install PlumBud during installation of a receptor into a 3-wall shower enclosure, the required width between the opposing shower walls, is the receptor width plus an extra 12mm for PlumBud. If this is not available install HydroHalt TileBud or TileBud Plus.



Spatula



Backer Rod Alignment Guide



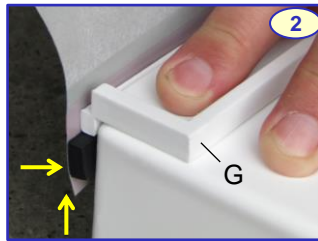
Alcohol Wipes



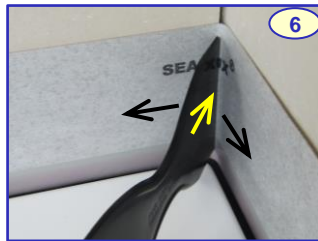
Quad. Spatula

# HydroHALT® PlumBud™

**Preparation:** Remove shower base/bath surface protection film from areas in contact with silicone. Ensure receptor surface is of a material type that adheres to silicone. Use wire wool to abrade surfaces in contact with silicone and clean with alcohol wipes or methylated spirits. Ensure all shower wall surfaces behind the Sealux strip are clean, dry and in good condition. Before bonding strip to wall, ensure receptor rests stable on floor and the waste system is tested for leaks.



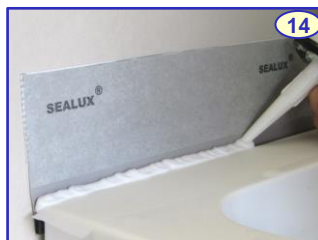
**(1)** Clean sidewalls with alcohol wipes. **(2)** Position the backer rod alignment guide (G) on ledge overhanging sidewall. Progressively removing the liner off backer rod, lift strip up until backer rod touches the underside of the alignment guide G, and then press the exposed adhesive face onto sidewall. **(3)** At corners, rotate alignment guide to overhang 2 sidewalls. Bend the strip 90° around corner bonding the backer rod onto sidewalls in the process. Rotate, reposition alignment guide and continue as instructed for remaining sidewalls and corners. **(4)** Pinch backer rod at corners.



**(5)** With the receptor in final position, remove the entire adhesive release liner off the back of the strip. **(6)** Use the spatula straight edge to **first** press-bond the exposed adhesive bed fully into each wall corner and **then** **(7)** onto walls without creasing the strip in the process. **(8)** Resting a pencil tip on the strip upper edge, draw wall lines to define the strip upper and end boundaries.



**(9)** Tape strip back away from wall. The Sealux strip can be bonded to wall using approved: liquid shower wall waterproofing compound or **(10-11)** non-solvent polymer adhesive or cementitious tile adhesive (not shown). Sealux-N can be used as the strip adhesive on most shower wall substrates if installer first applies masking tape outside strip upper and end boundaries to prevent smearing silicone on wall. **(12)** Do not smear Sealux-N over strip outside face.



**(13)** Apply masking tape over ledge surface outside joint to avoid smearing silicone over ledge. **(14)** Apply Sealux-N into joint leaving it slightly proud. **(15)** Rub up Sealux-N to fall towards ledge. Complete one side at a time. **(16)** Remove masking tape off ledge (and wall if applied) soon after.